



# Hyogo Prefectural Institute for Educational Research and In-Service Training

[Mission](#)

[Organization](#)

[Facility Layout](#)

[Location & Access](#)

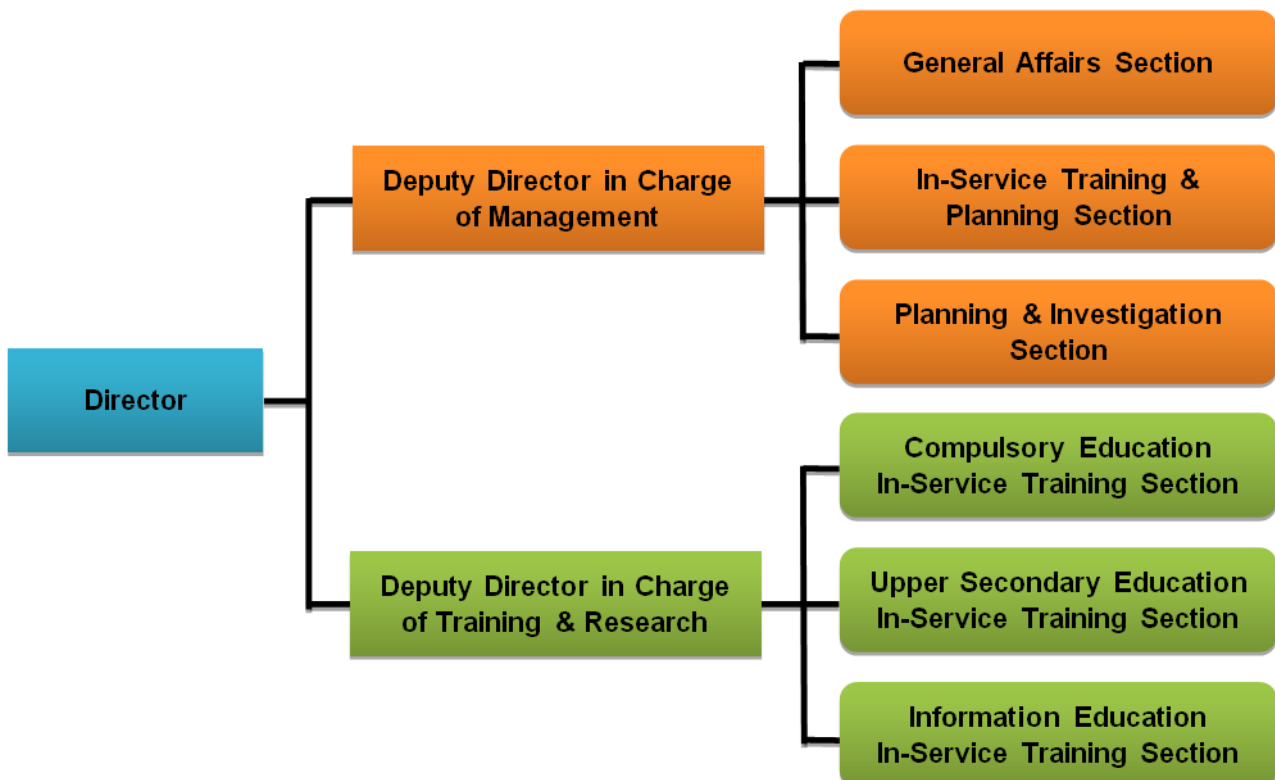
[Map](#)

## Mission

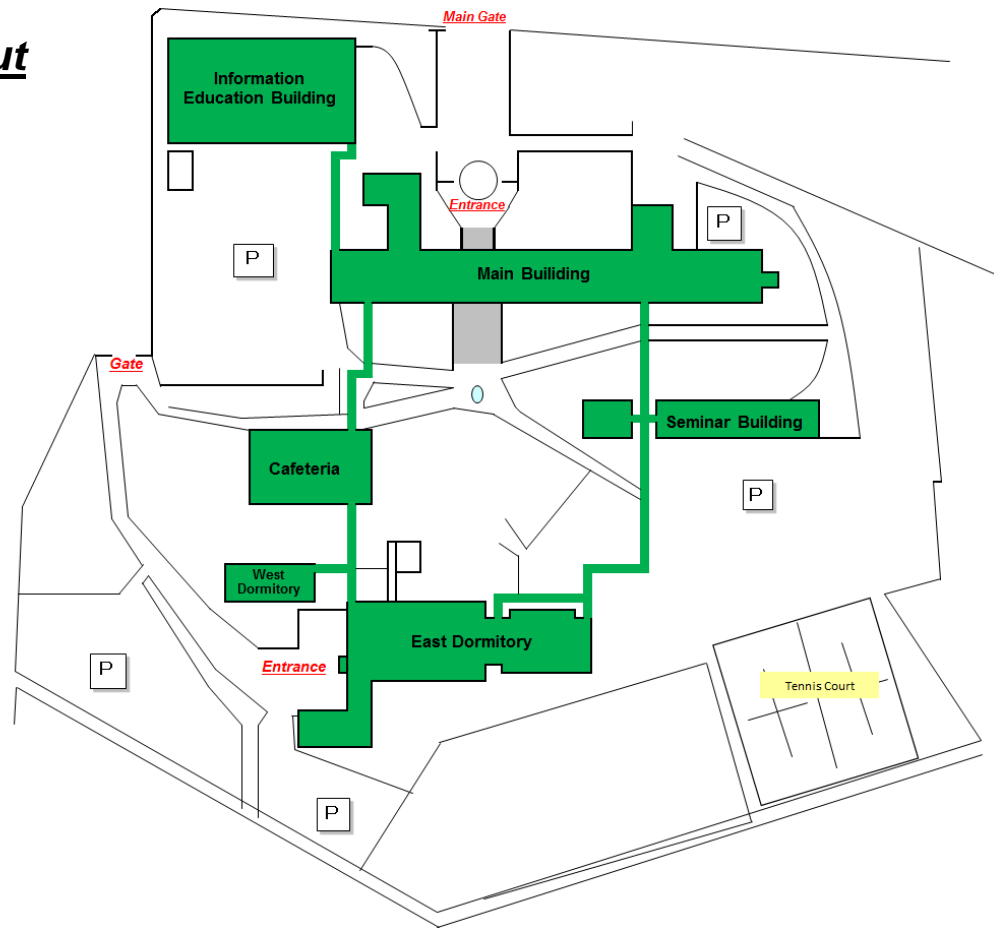
In order to contribute to the improvement of education in Hyogo Prefecture, we carry out the following missions.

<b><i>In-Service Training</i></b>	We provide a wide variety of seminars for teachers to meet the various demands of education at the elementary school, junior high school, and senior high school levels.
<b><i>Educational Research</i></b>	We conduct research on educational issues based on real situations in school. The findings are published in our annual bulletin.
<b><i>Information Support</i></b>	We collect and sort out educational information and materials for schools and teachers. We also support schools by providing the information network service. Furthermore, we publish our monthly magazine, "Hyogo Education," which contains articles written by teachers and other educational professionals.

## Organization



## Facility Layout



## Location & Access

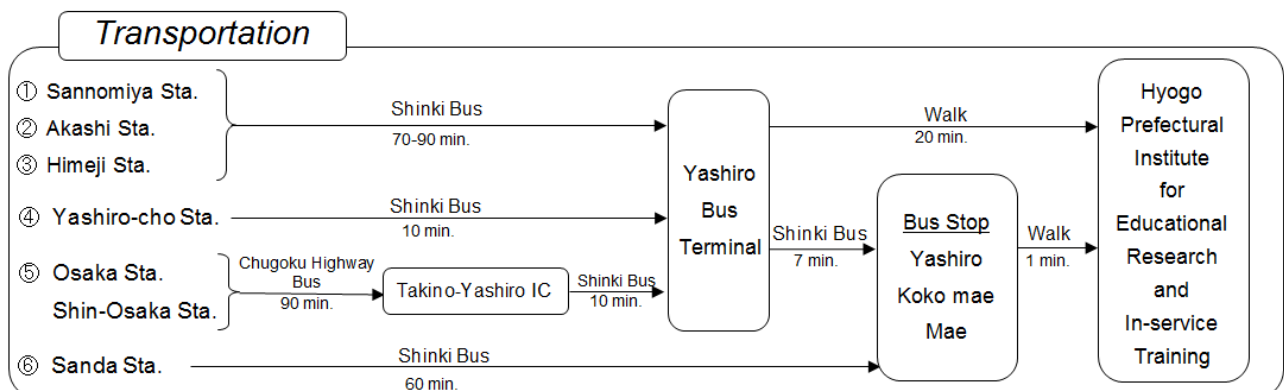
2006-107 Yamakuni, Kato-city, Hyogo 673-1421  
 Phone: 0795-42-3100 Fax: 0795-42-5393  
 URL: <http://www.hyogo-c.ed.jp/kenshusho/>

### By Car

Both from Takino-Yashiro IC of Chugoku Express Way and from Miki-Ono IC of Sanyo Express Way, drive along National Route 175 and take National Route 372. Drive east toward Sasayama about five minutes and turn right at the Ureshino intersection. Our institute is about 400m from there.

### By Train or Bus

To catch a bus to our nearest bus stop, Yashiro-koko-mae, you need to go to Yashiro Bus Terminal. Even from our nearest train station, Yashiro-cho Station of JR Kakogawa Line, you need to take a bus to the terminal. Bus services to the terminal are also available from the main JR stations.



\*As train and bus services are fairly limited, you are advised to check the time table in advance.

**Map**

